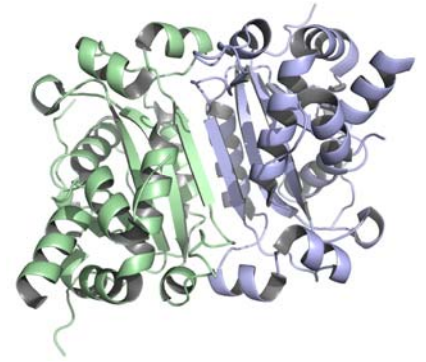


Structural and Computational Biophysics Discussion Group



(scb.wfu.edu)

Foothills Brewing Company (side room)
638 West 4th Street, Winston-Salem, NC
(<http://www.foothillsbrewing.com/>)

September 28, 2009, 3:30-5:30 pm

Rebecca Alexander

Department of Chemistry

Biochemical and computational analysis of protein dynamics

October 26, 2009, 3:30-5:30 pm

Yuh-Hwa Wang

Department of Biochemistry

Human chromosomal fragile sites and cancer

November 30, 2009, 3:30-5:30 pm

Keith Bonin

Department of Physics

Optogenetics

*Everyone (faculty, students, post-docs, research associates
and all) with an interest in structural and computational
biology and biophysics is invited!*

For more information, please contact Leslie Poole, lbpoole@wfubmc.edu